

cVPP/ECCO Workshop

8 December 2021
10h30-12h00

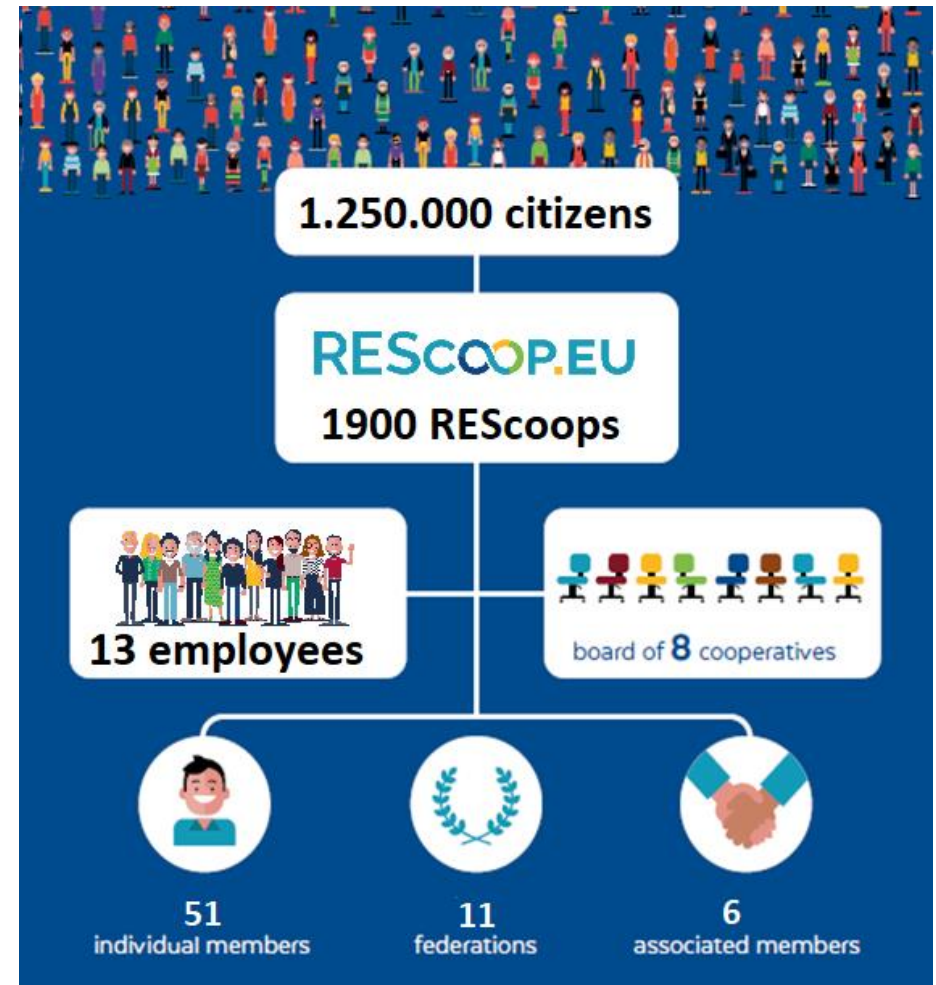
REScoop.EU

Interreg 
North-West Europe
cVPP
European Regional Development Fund

Interreg 
North-West Europe
ECCO
European Regional Development Fund

Who are we?

- *REScoop.eu is the European federation of citizen energy cooperatives*
- *Established in 2013*
- *Citizen energy cooperatives are groups of citizens that organise under a legal entity to collaborate on energy transition projects*



What do we do?

- *We provide* **citizen representation at EU level**
- *We support* **starting and established energy cooperatives**
- *We facilitate* **international exchanges**
- *We promote the* **cooperative business model**

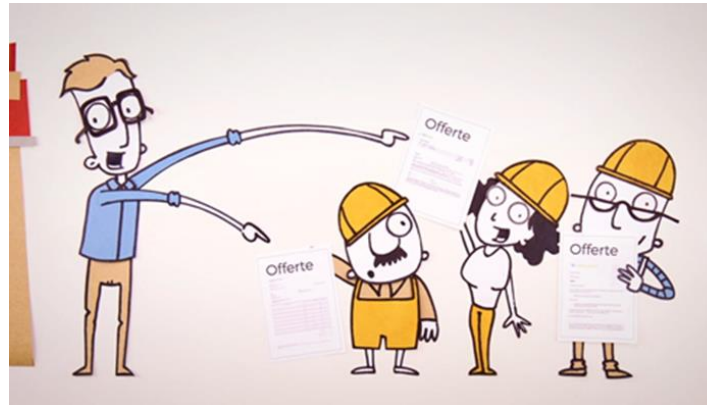


Credits: Ecopower



Credits: REScoop.eu

The energy communities are there



The policy framework is there

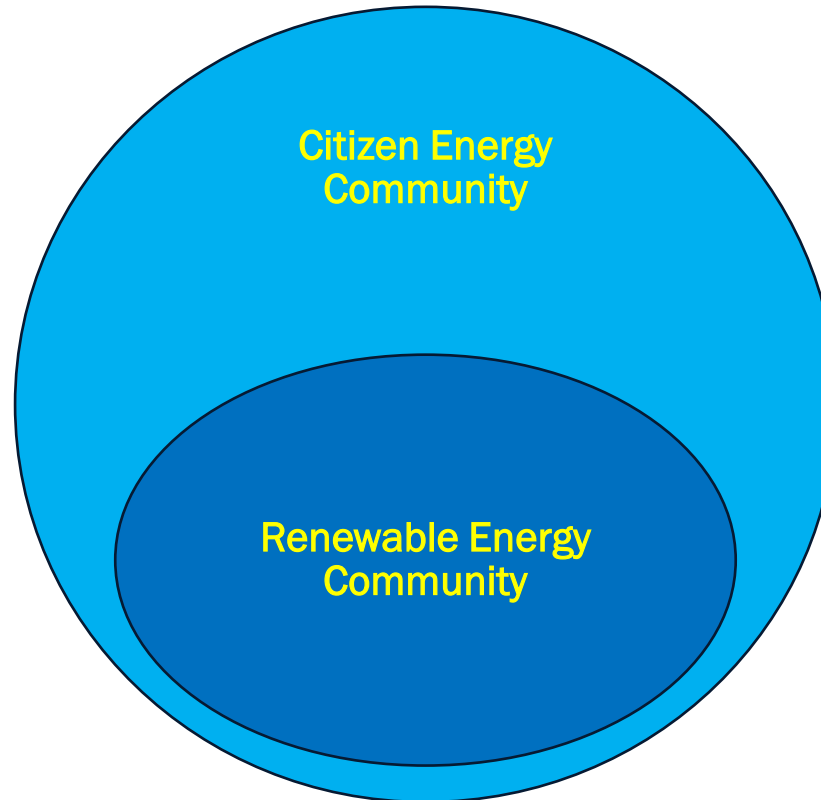
Citizen energy community

a legal entity:

which is based on voluntary and open participation, effectively controlled by shareholders or members who are natural persons, local authorities, including municipalities, or small enterprises and microenterprises.

The primary purpose of a citizens energy community is to provide environmental, economic or social community benefits for its members or the local areas where it operates rather than financial profits.

A citizens energy community can be engaged in electricity generation, distribution and supply, consumption, aggregation, storage or energy efficiency services, generation of renewable electricity, charging services for electric vehicles or provide other energy services to its shareholders or members.



Renewable energy community

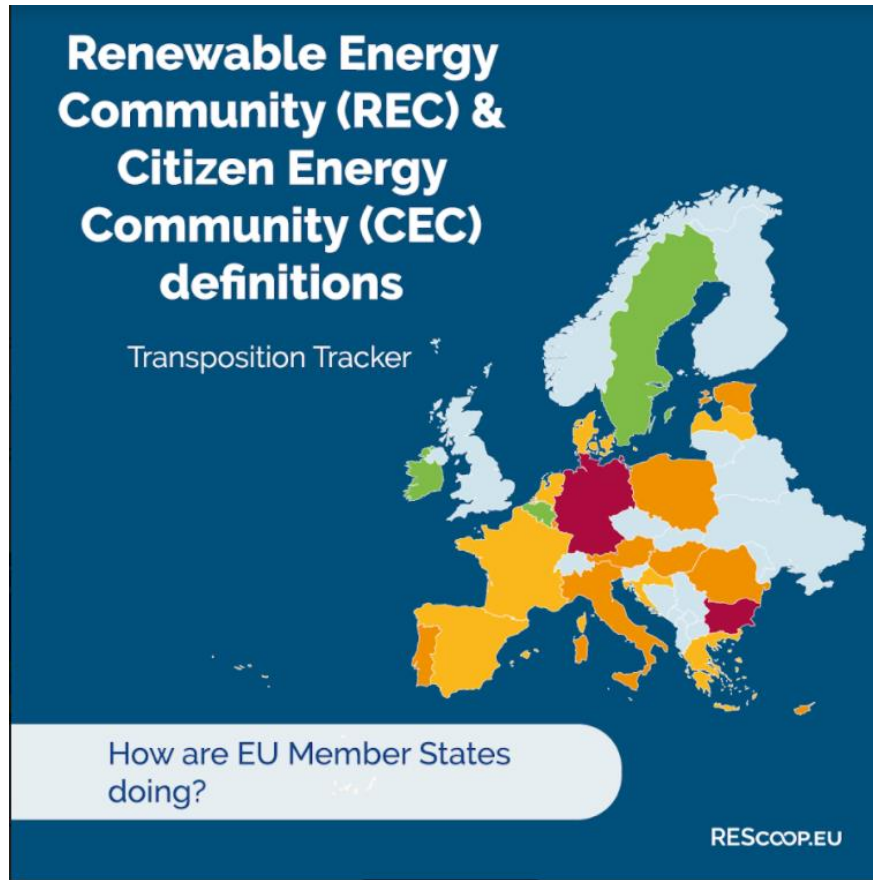
a legal entity:

which, in accordance with the applicable national law, is based on open and voluntary participation, is autonomous, and is effectively controlled by shareholders or members that are located in the proximity of the renewable energy projects that are owned and developed by that legal entity;

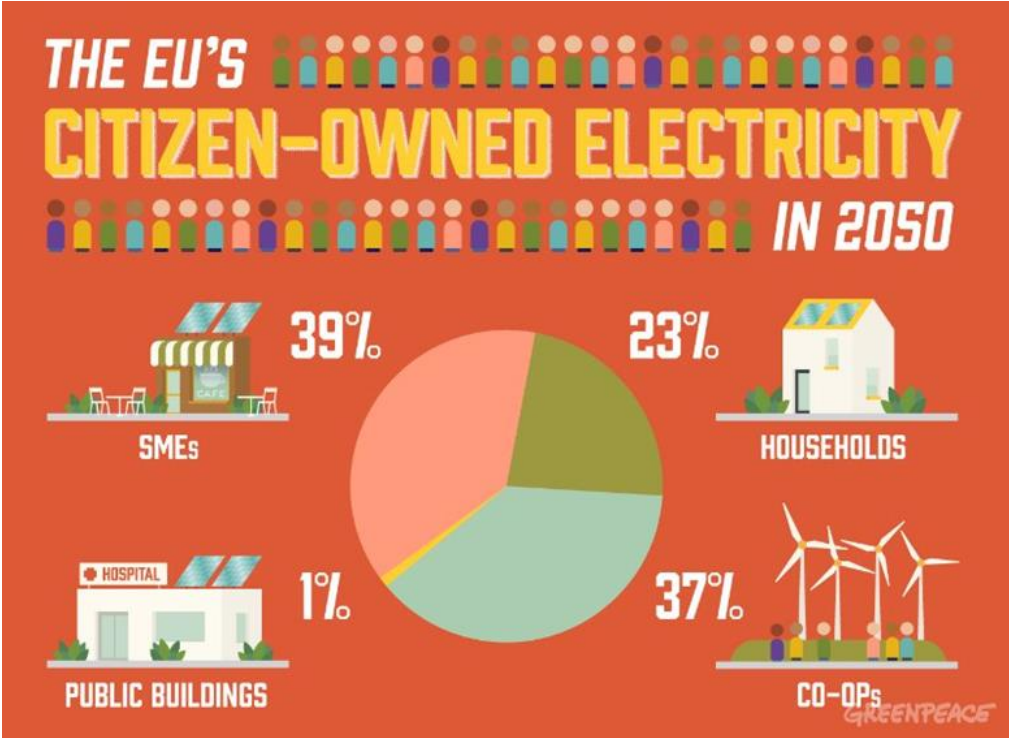
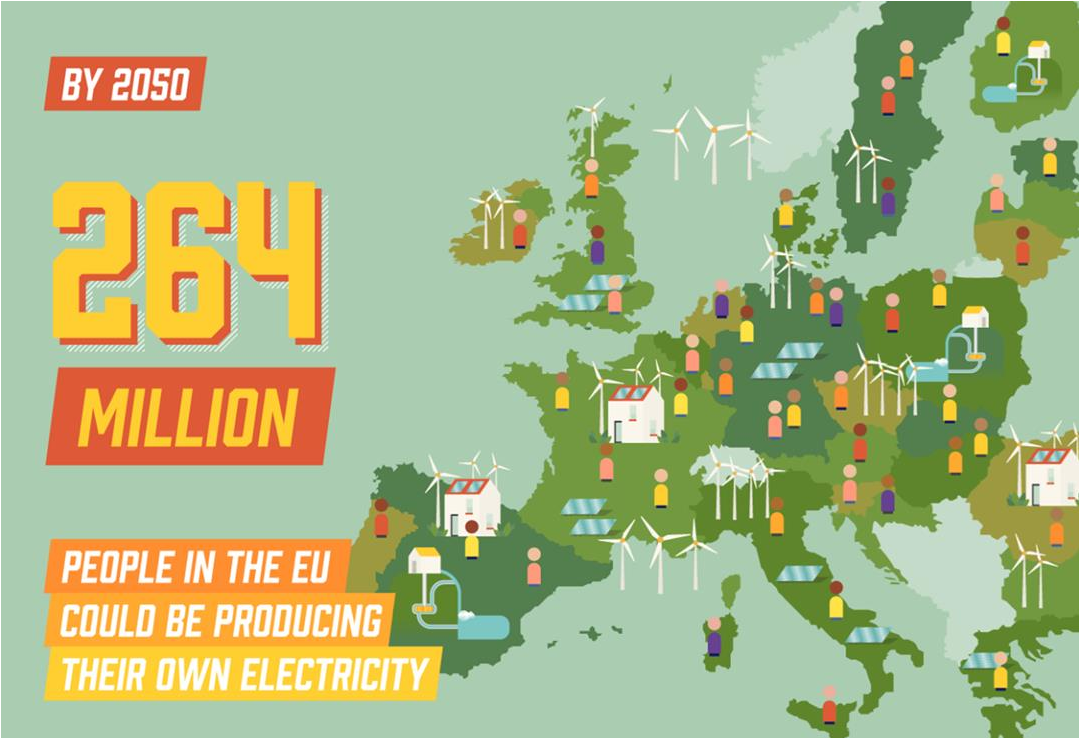
the shareholders or members of which are natural persons, SMEs or local authorities, including municipalities;

the primary purpose of which is to provide environmental, economic or social community benefits for its shareholders or members or for the local areas where it operates, rather than financial profits.

The policy framework is there

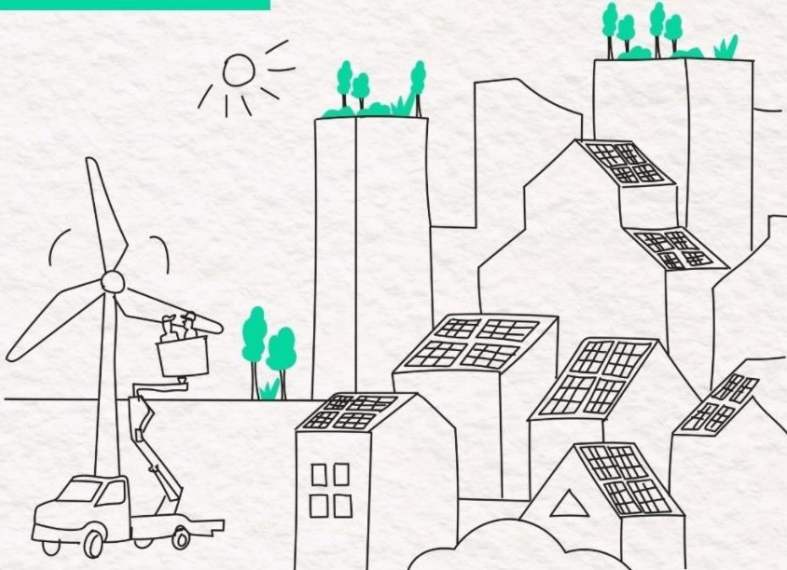


The potential for community energy is there




The interest by citizens is there


IMAGINE A WORLD WHERE ENERGY IS CLEAN AND LOCAL




86% of Europeans support new wind and solar projects in their local area



IMAGINE A WORLD WHERE ENERGY PRODUCTION IS OWNED BY LOCAL PEOPLE.

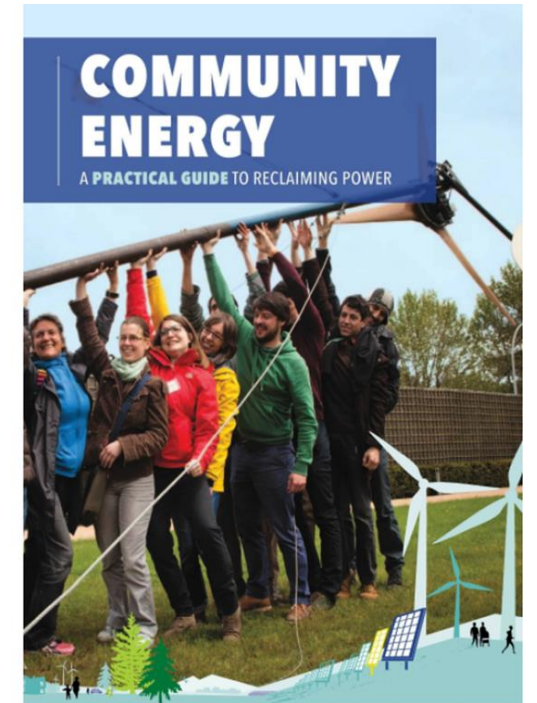


61% of Europeans would be likely to join an energy cooperative if one were set up in their local area



Some challenges remain

- *Transposition in MS*
- *Many funding agencies*
- *Many projects*
- *Many models*
- *Many tools*
- *Many contexts*



We need a European one-stop-shop

Interreg 
North-West Europe
ECCO
European Regional Development Fund

PROTOTYPE

Welcome To The ECCO One Stop Shop

Your One Stop Solution For ALL Things Community
Energy.

[Login](#) [Register](#)



RESSCOPE.U search member login [become a member](#)

the REScoop model services policy EU projects network news & events toolbox about us

Download our resources

REScoop.eu created and collected tools, reports and papers aiming to support a local, community-led renewable energy revolution in Europe.

Toolbox

Filter:

- Activities - - Audience - - Projects - - Types - [Filter](#)

COMMUNITY ENERGY

Community Energy: A practical guide to

WORKSHOP FACILITATION GUIDE

Workshop Facilitation Guide

WISEPower

Final Publishable Report of the WISE POWER project

Stages for community development





Not sure where your community stands?

TAKE THE TEST

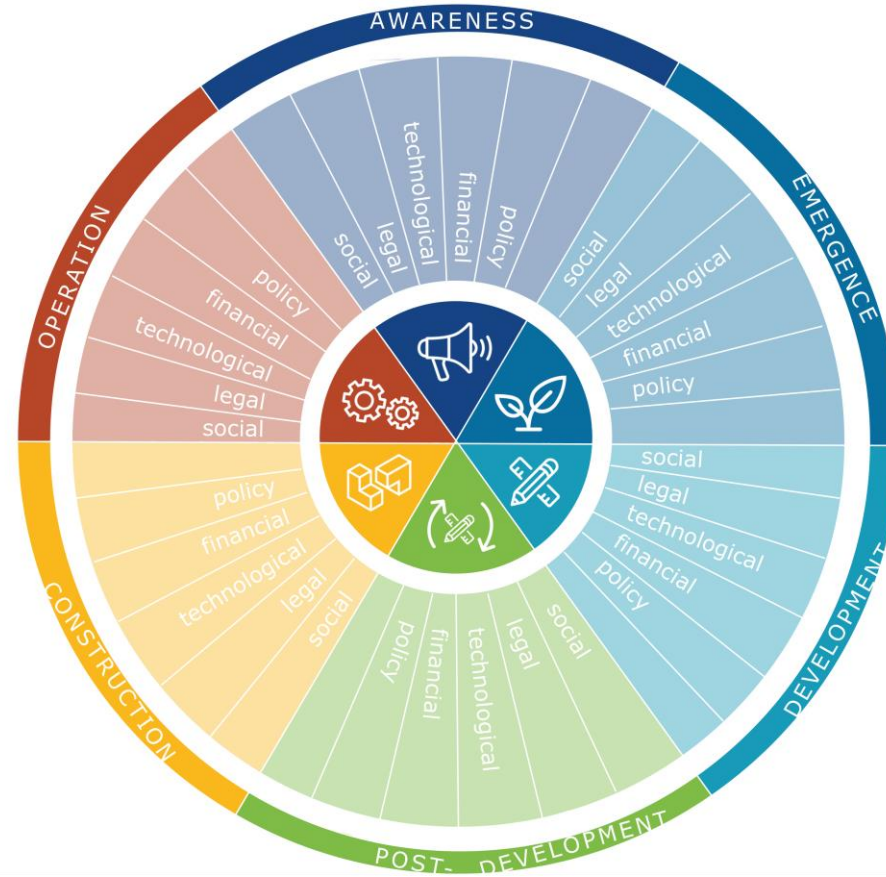
HIGHLIGHTS

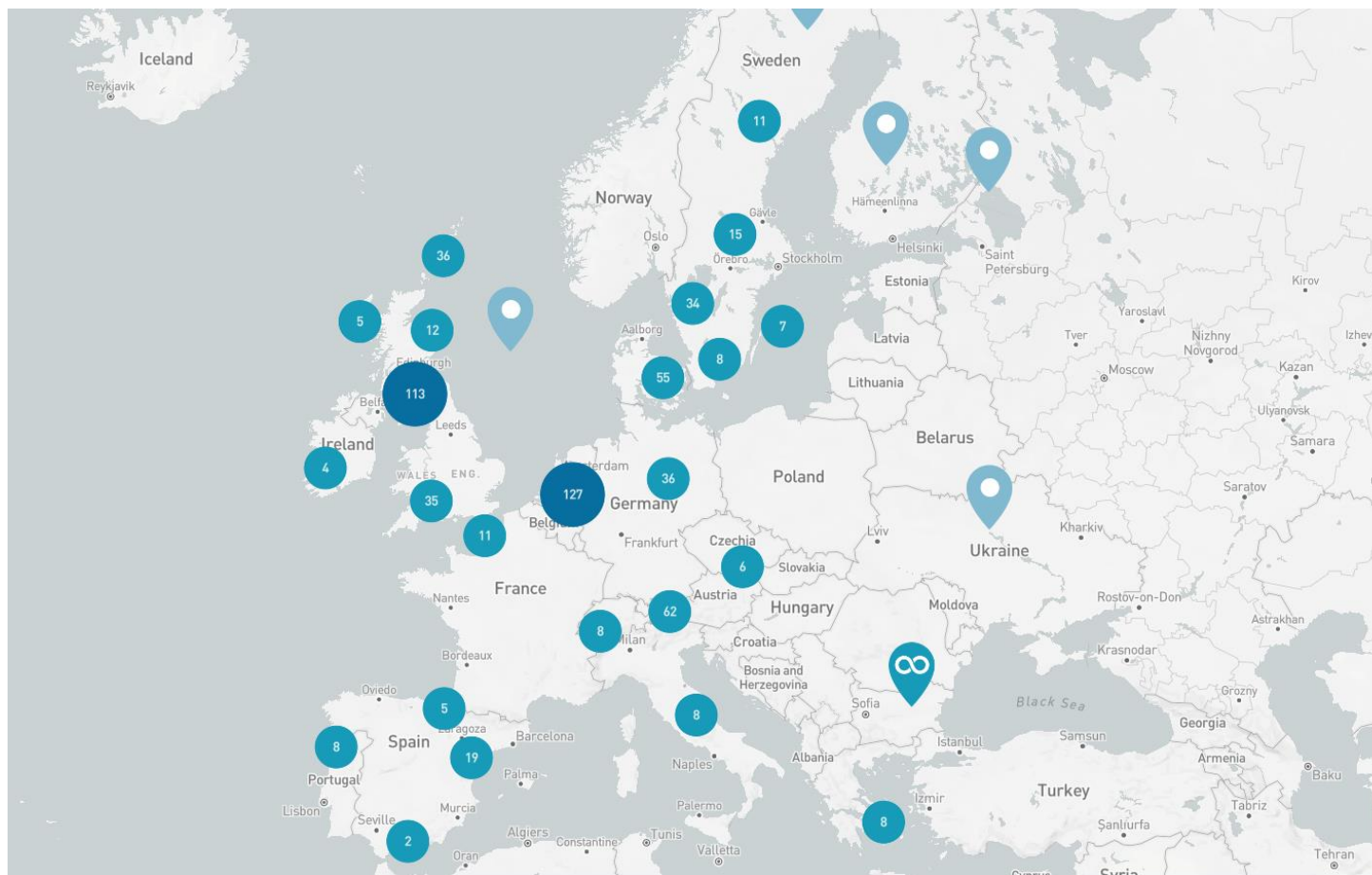
News item 1

News item 2

News item 3

News item 4





CONTACT AN EXPERT

SEARCH BAR/FILTER



Vaiva



Sara



Stan



Josh



Stavroula



Sem



collaboration with municipalities



electric mobility



solar



wind



flexibility & storage



community building



energy efficiency



hydro



financing



distribution grid management



biomass / district heating



supply/energy sharing/P2P

Now let's have a chat

- *3 breakout groups*
- *15 minutes*
- *1 rapporteur*
- *What are the challenges and needs?*
- *What tools or resources could help to overcome those?*



REScoop.EU

www.rescoop.eu

info@rescoop.eu

 [@rescoop.eu](https://www.facebook.com/rescoop.eu)

 [REScoopVideos](https://www.youtube.com/REScoopVideos)

 [rescoop.eu](https://www.instagram.com/rescoop.eu)

 [@REScoop.eu](https://twitter.com/REScoop.eu)

 [REScoop.eu](https://www.linkedin.com/company/REScoop.eu)



Energy Communities Coming of Age

A literature review on maturity and scaling

What can you find in the report (I)

Chapter: Development and scaling of energy communities

- The wider context of social innovation in the energy transition
- Definitions and terms of collective citizen action
- A review throughout history, and in today's practice
- Two frameworks (SNM and TSI) that explain the scaling of energy communities

Chapter: Preconditions for collective action at the neighbourhood level

- The challenges and benefits, as well as drivers and barriers
- Internal and external community, professionalization, finance, technology, policy

What can you find in the report (II)

Chapter: Community energy actions: suggestions and best practices

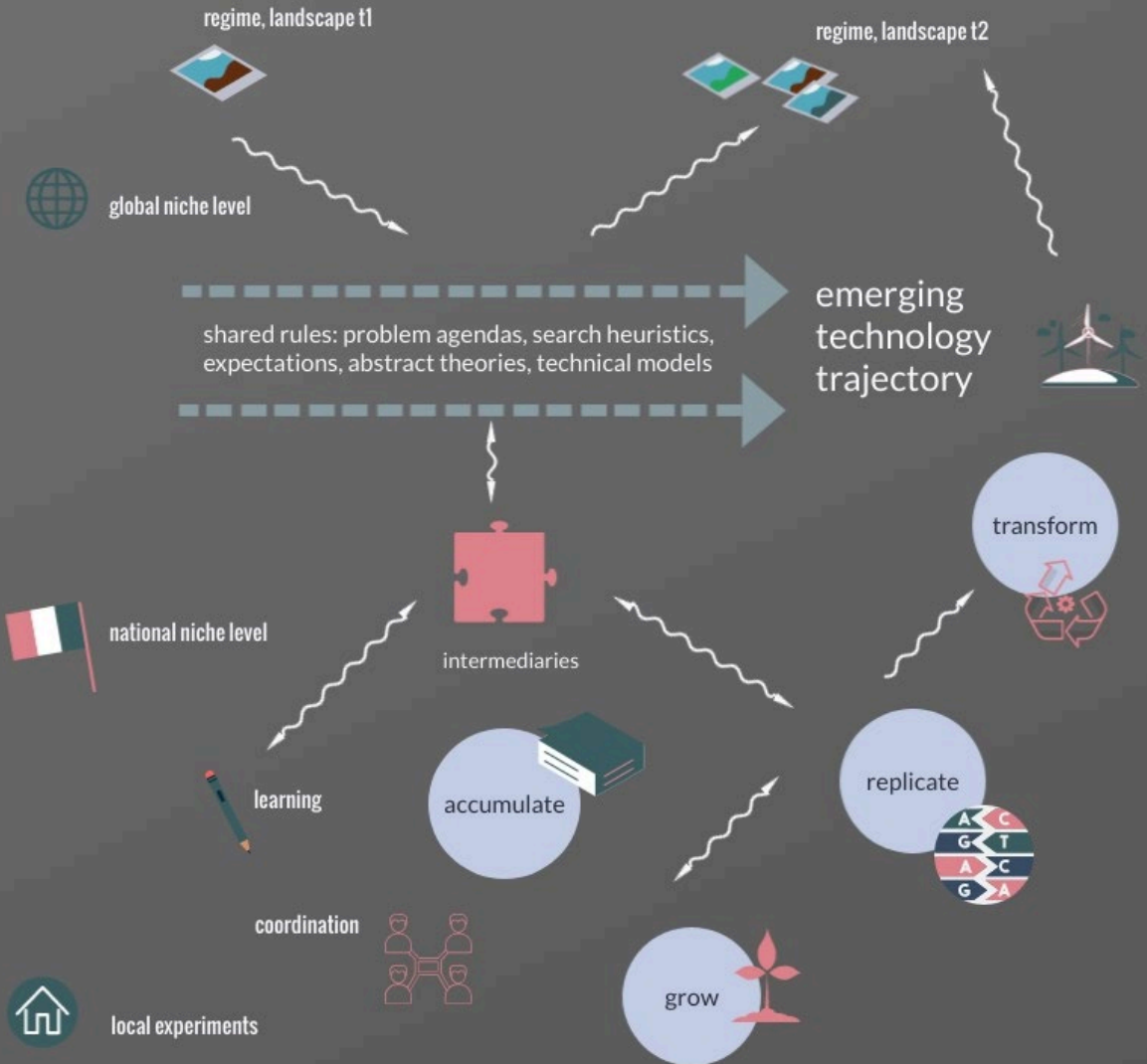
- Actions and best practices with regard to network formation, multi-stakeholder management, how to engage the wider community, and build relations to the political system
- Overview of digital technologies for community energy, such as digital community platforms, blockchain technology, gamification, and peer-to-peer trading
- Data, privacy and cyber security

Chapter: Evaluation and monitoring

- Creating a tool to assess, monitor and evaluate maturing, and scaling community energy



Presented frameworks



Patterns of upscaling and the emerging technological trajectory (adapted from Geels and Raven 2006).

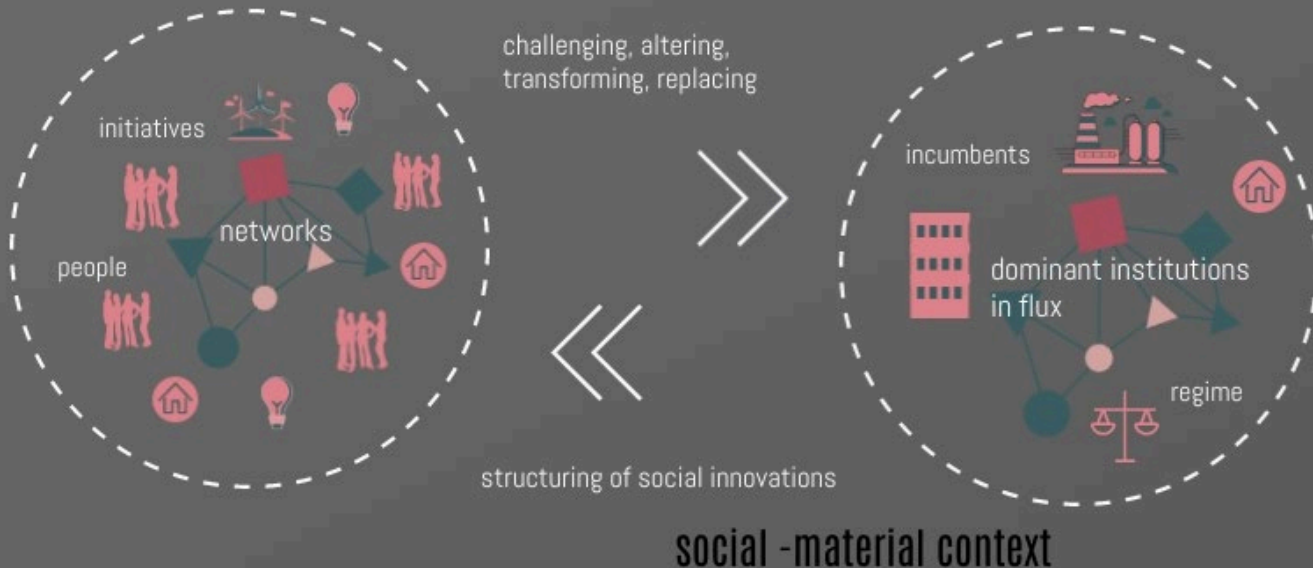
1) relations in SI initiatives

- experimentation
- new social relations
- empowerment

3) relations to institutional change

- finding a home
- adaptive strategies
- transposing logics

social innovations



2) relations in network formation

- building alliances
- translocal connectivity
- discourse formation

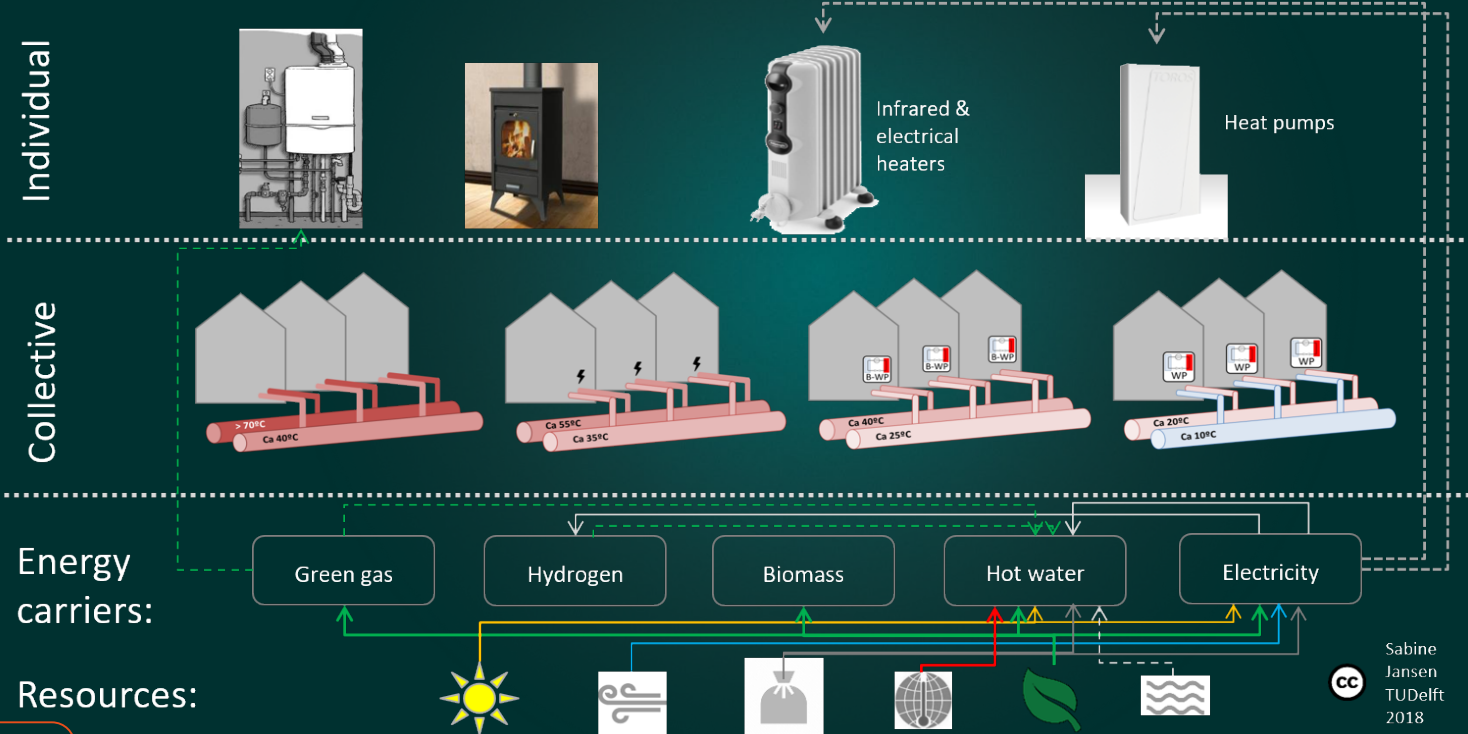
4) relations to socio-material context

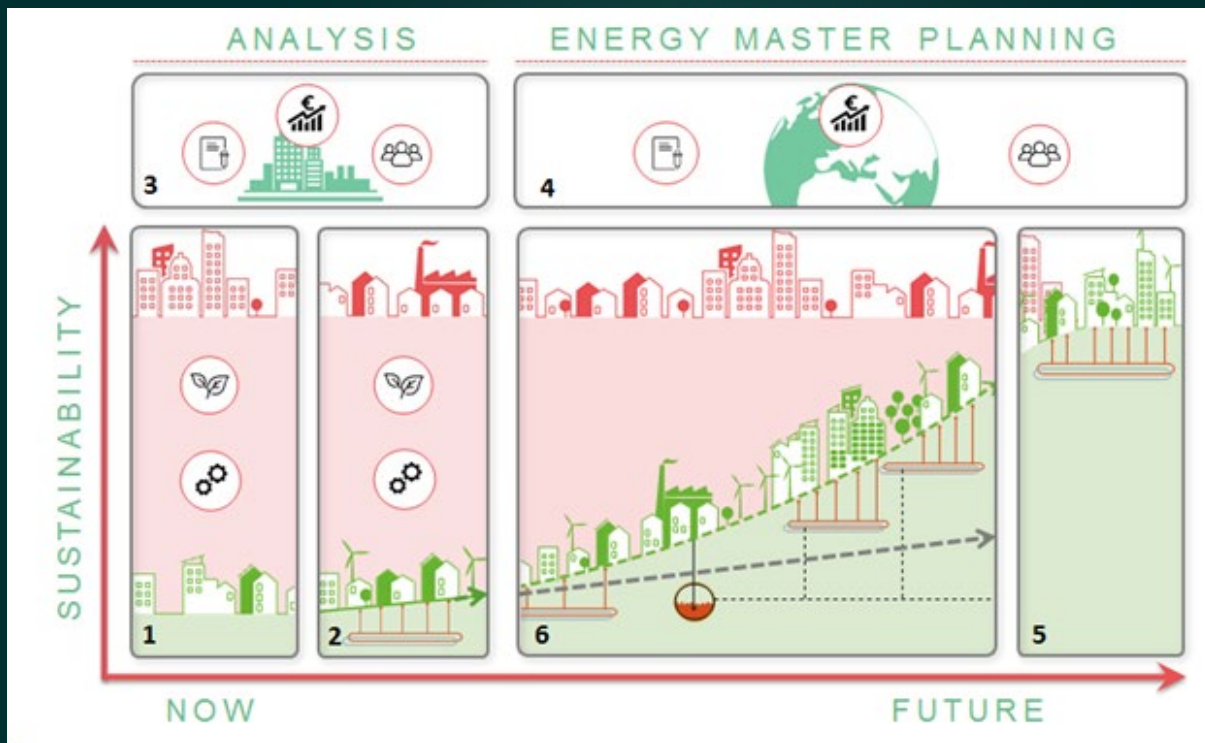
- diverse transformations
- path dependencies
- re-emergence



Technological complexity

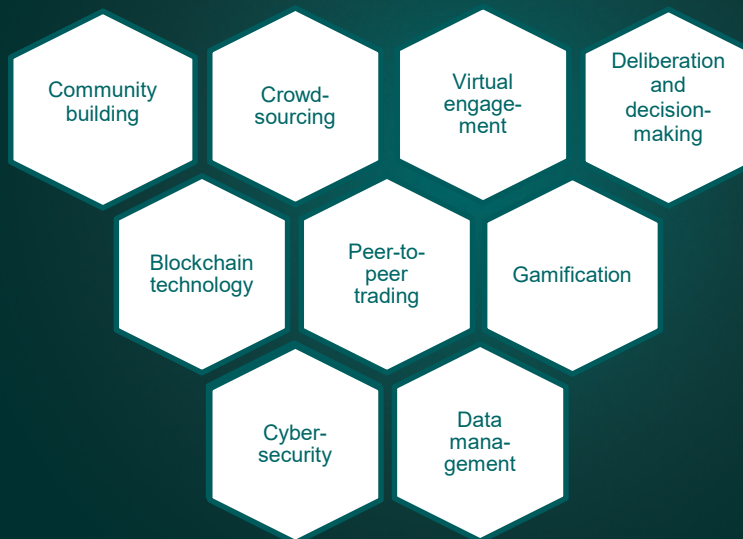
Alternative heating solutions for the built environment





The City-zen
energy
transformation
methodology
(Dobbelsteen et
al. 2019)

Digital technologies for community energy



Stage of change

Collective action energy communities can undertake

Preparation phase

Social (community):

- Commitment of members and efficacy of interactions
- Human capital
- Looking for empowerment by critical actors
- Connection/alignment with the local community and stakeholders (e.g. neighbourhood organizations, citizen engagement, multi-stakeholder management)

Social (staff):

- Forming a leadership team
- Communication of key personnel and clear management structure
- Sufficient staff members with a complete set of competences (e.g., technical, legal, financial, social).
- Explore social network environment to add more organizations from which critical resources can be mobilized
- Having 'project champions' on board
- Ensuring board diversity (and inclusiveness)
- Contractual founding of a formal organisation

Financial:

- Profit and loss statement
- Available capital and assets,
- Reliance on public funding
- Cash burn rate
- Means to generate cash flow (e.g. crowdfunding); exploring funding options and apply for funding
- Preparing application of permits or subsidies
- Feasibility scan of business case

Political:

- Number of administrative and regulatory barriers
- Relation / connection to local and regional administrations
- Seek to find 'political home', i.e. support from public official

Technical:

- Map technical status quo (i.e. system analysis)
- Explore and compare technical alternatives and potential (of potential community energy projects)
- Conduct feasibility and risk analysis of plans made
- Scope and scale of service offer
- Support by external technical experts

Learning:

- Education of the staff and members
- Connection to learning platforms / intermediary organizations to help in capacity building
- Embedding own organization in translocal network(s)
- Gamification as a learning tool



Co-creation
workshop Brussels



Monitoring Tool

sccale203050.eu

Structure

Indicators (KPIs)

- Threshold indicators
- Continuous indicators

Stages of change

- Contemplation / Preparation / Implementation / Maintenance

Categories

- Different energy communities have different activities
- therefore different set of indicators



ENERGY COMMUNITIES MATURITY MONITORING TOOL

This tool helps monitor development progress of your Renewable Energy Community (REC), and has been developed as part deliverable 2.2 of the SCCALE 20-30-50 Horizon 2020 project.

You are currently looking at the **START** tab, where you can define which categories your REC is involved in, and change your stage (more about this below)

On the **DASHBOARD** you can see your progress. Because different categories can evolve faster or slower for different RECs, you can define your own stage. This will only influence visibility of individual tasks, their scores can continue to be modified during your REC's development.

The **QUESTIONS** tab asks you questions to help assess your REC's progress. Some questions are threshold indicators (to be answered with a yes or no), and usually indicate the presence or absence of something. Others are continuous indicators (to be graded A to F, where A is the best and F is the worst), where you can estimate your REC's status for that particular category.

The **TO DO LIST** tab finally provides you with a set of tasks that need attention in order to progress to the next stage. This list is further split up in categories in the other tabs, for ease of printing out and distributing amongst those key REC members that deal with the respective category.

ALL	Is your REC involved in:*	?	ALL
GEN	Generation	no	no
SUP	Supply	no	no
CON	Consumption and sharing	yes	no
DIS	Distribution	no	no
SER	Energy services	no	no
MOB	Electro mobility	no	no
FIN	Financial services	yes	no
EFF	Energy Efficiency	yes	no

Authors: Michiel Fremouw, Thomas Hoppe, Anatol Itten, Flavia Trovalusci
Delft University of Technology



This project has received funding from the European Union's Horizon 2020 research and innovation programme under grant agreement No 101033676. The sole responsibility for the content of this document lies with the SCCALE 203050 project and does not necessarily reflect the opinion of the European Union.





Questions & Discussion



Thomas Hoppe



Michiel Fremouw



Anatol Itten



Flavia Trovalusci